



<b>Engine</b>	Cummins 6BTAA5.9-C178-II
<b>Gross Power</b>	133 kW (178 hp / 181 ps) @ 2,000 rpm
<b>Net Power</b>	125 kW (168 hp / 170 ps) @ 2,000 rpm
<b>Maximum Digging Depth</b>	6,925 mm
<b>Standard Bucket Capacity</b>	1.2 m <sup>3</sup>
<b>Operating Weight</b>	25,500-28,200 kg

## **925E**

# **EXCAVATOR**



# MAXIMIZE RETURN ON YOUR INVESTMENT

LiuGong's **customer-driven** design and **quality-focused** engineering creates lasting value that will deliver to your bottom line.

## DEPENDABLE POWER

Unmatched performance driven by the Cummins 6BTAA5.9-C178-II Tier 2/Stage II Engine,

## IPC (INTELLIGENT POWER CONTROL)

IPC ensures the mechanical, electrical and hydraulic systems work in perfect harmony for efficient and precise control. Maximizing torque outlet with more power and breakout force.

## AUTO-IDLE SPEED FUNCTION

Hydraulic signals detect activity, decreasing and increasing engine speed as required. Power is supplied only as needed, achieving optimum fuel efficiency.

## VERSATILITY

Options for auxiliary hydraulic piping include bi-directional variable high flow lines, an additional line for rotating attachments and also a single acting line. The quick coupler further ensures you get the most out of your machine by easily switching between a wide range of attachments to suit any application.

## BOOM AND ARM

Boom and arm structures are designed for long-term durability and resistance to bending and torsional stress. Large cross-sectional areas incorporate one-piece steel castings to provide improved strength and standard rock guard plates and vertical guards further protect the arm in rocky conditions.

## UNDERCARRIAGE

Outstanding stability and durability come from an X-type reinforced frame and the long track beam and crawler system.

## REAR VIEW CAMERA

Like an extra eye outside the machine, the optional rear view camera sends images to the in-cab colour LCD monitor, creating a safer working environment as you concentrate on the work at hand.

## PARTS

Using genuine LiuGong parts is key to keeping your costs low and your machine in top working order. Our extensive support network is always there when you need it, to maximize your business profitability.

## AFTER SALES SERVICE

As a customer of LiuGong you can feel confident that our dealers and regional offices will be there to support you with training, service and maintenance needed throughout the life of your machine.





# EFFICIENCY, PRECISION & VERSATILITY

LiuGong E series excavators deliver the **perfect balance** of performance, precision and quality. The 925E Tier 2/Stage II models are powered by the latest generation, low emission Cummins 6BTAA5.9-C178-II engine, with enhanced power output, **improved breakout force** and faster cycle times.

## A POWERFUL ENGINE

The Cummins engine meets EPA Tier 2/ EU Stage II emissions standards, delivering the greatest possible fuel economy without compromising on power.

The 6BTAA5.9-C178-II engine employs a proven cooled-EGR system, complemented by Cummins patented Turbocharger, which precisely adjusts the airflow delivered to the engine increasing performance and improving fuel economy.

## ADVANCED HYDRAULIC SYSTEM

Within the advanced hydraulic system of LiuGong excavators, negative flow of the hydraulics optimizes the main control valve. This helps to maximize the cycle time of the cylinders, leading to improved efficiency and a higher rate of work completed.

The hydraulic system works efficiently in transferring engine power to the ground providing widespread control and precision.

## INTELLIGENT POWER CONTROL

LiuGong's advanced Intelligent Power Control (IPC) system delivers the power you need, only when you need it, ensuring powerful performance, without excess fuel wastage.

The new-generation computer-aided IPC system harnesses the mechanical, electrical and hydraulic systems to work in perfect harmony for efficiency, precision and control. When the working load increases, engine power and hydraulic pump flow respond to meet the demands of the job.

LiuGong's six selectable working modes give you full control of the machine and enhanced performance under various operating conditions:



## AUTOMATED FUNCTIONS

The machines maximize fuel economy by regulating its idle speed. If for just one second there is no hydraulic request signal detected from the joystick, the engine speed is automatically dropped by 100 rpm. If no activity is detected over three seconds the engine speed will decrease to idle. As soon as the system detects the hydraulic signal

once more, the engine will immediately return to the previous throttle speed setting.

The engine's automatic warm-up system brings it up to operating temperature quickly, further improving fuel consumption, reducing emissions, and maximizing uptime.





# DESIGNED TO GET MORE DONE

The machines are designed to **get more done** in less time. Featuring a stronger boom arm and bucket breakout force, greater hydraulic flow, higher swing speeds and improved cycle times, this excavator will **power through any task** in any terrain.

## POWERFUL PERFORMANCE

The Cummins 6BTAA5.9-C178-II engine produces high power output. LiuGong has harnessed this power for the six working modes of the excavator. Perfectly match these work modes to the job at hand and even the least experienced of the operators will find they can work faster and complete more in less time.

## OPTIMIZED HYDRAULICS

Where intelligence meets brute force. Negative flow hydraulics direct the engine's power to ensure hydraulic pump flow continually adjustable for smooth, quick and efficient operation.

Engine power and hydraulic pump flow are automatically reset to adjust for the load attachment, helping to maximize the efficiency of the machine.

## IMPROVED MACHINE DESIGN

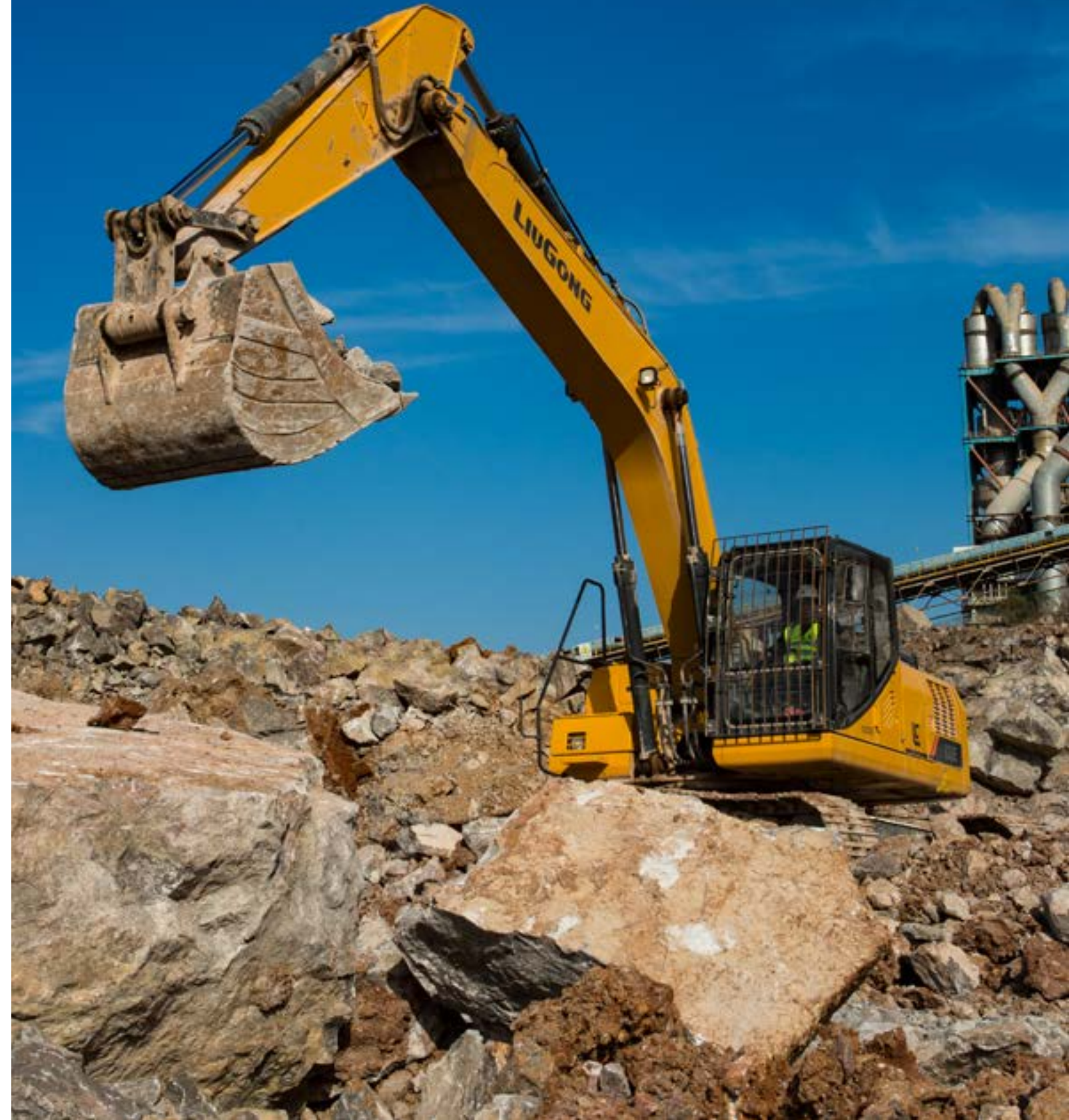
The 925E's tough and reliable structure provides increased strength, reduced wear, and improved transmission of power to the ground drive.

## QUICK-CHANGE ATTACHMENTS

LiuGong quick coupler and Power Latch tilt couple make changing over attachments like buckets, breakers and shears quick and simple which maximize your uptime.

## OPERATOR FRIENDLY ENVIRONMENT

Ergonomically designed controls, clear and informative displays, increased visibility, and exceptional comfort increases operator efficiency and safety. The easily accessible service points ensures important daily servicing and routine maintenance gets done.





# TOUGH AND DURABLE STRUCTURES

The use of thick, high-tensile steel components, internal baffling and stress-relieved plates, make the structures on LiuGong E-series excavators **tough and durable**.

We guarantee the **quality and reliability** of our machines throughout the manufacturing process by conducting stringent tests and ultrasound inspections that detect defects well before they make it into production.



## BOOM & ARM

The boom and arm structures are designed with large cross-sectional supports and incorporates one-piece steel castings. This solid engineering guarantees long-term durability and high resistance to bending and torsional stress. Standard rock-guard plates and vertical guards protect the arm in rocky digging conditions and tough environments.

## UPPER STRUCTURE

The upper structure is strongly reinforced by the use of an H-beam in the high cross section of the main structure providing even weight distribution and increasing stability.

The platform's collision protection system has been welded into place to improve its strength, rigidity and overall service life.



## UNDERCARRIAGE

The high-strength undercarriage of the 920E/922E/925E incorporates a welded X-frame construction for long life durability and is designed to perform in the most challenging applications.

A long track beam and crawler system provides greater stability when using attachments for digging and truck loading. The result is outstanding strength and durability.



# SAFETY WITHOUT COMPROMISE

LiuGong's commitment to you includes an equal commitment to your **safety**. E-series excavators are equipped with all the necessary safety features to give you peace of mind and help you **focus** on the job at hand.

## SAFETY STANDARDS

All LiuGong E-Series excavators come with certified ROPS (Roll Over Protection System) cabs meeting ISO safety standards. LiuGong offers FOPS (Falling Object Protection System) as an option on all E-Series excavators.

## EXTENSIVE VISIBILITY

LiuGong's E-Series cabs have seven percent larger glass surface area compared to our D-Series cab. Standard rear view camera gives the operator a panoramic view, combined with optional LED work lights, provides clearer line of sight on job sites.

## SAFE ENTRY

Safety rails and well-positioned anti-slip tape on the upper part of the machine make it easier and safer during machine servicing.





# ALL AROUND COMFORT

In the cab, you are working in complete comfort with outstanding visibility all around. We understand how operators like to work and have designed the cab for **maximum comfort** and ultimate productivity.

## AT HOME IN THE CAB

The E series cab is ROPS ISO 12117-2 certified mounted on dampener silicone to absorb noise and vibration. Wide spacious cab door swings full open to lock position. Front windshield slides up into ceiling, removable lower window, large roof skylight with sun screen.

## ADVANCED CLIMATE CONTROL

Pressurized cab, advanced climate control system and front windshield defrost allow all year around operating comfort in any environment. Air is circulating through cab by ten outlets to improve air circulation.

## ADJUSTABLE SEAT AND JOYSTICK CONSOLE

The adjustable seat and joystick console move independently to accommodate the operator. Increased spacing between the armrest and nine different seat adjustments allow the operator more options to all foot and hand controls for maximum comfort.





# DAILY CHECKS AND MAINTENANCE SHOULDN'T BE TOUGH

LiuGong excavators have been **specifically designed** for easy service and maintenance in even the most remote and harsh environments. If servicing is easy, it gets done.

## PRACTICAL SERVICING

Smart and effective design makes service and maintenance fast and simple – that's good news for operators who work in some of the toughest places on the planet. Handrails are fitted as standard on the 950E, enabling safe and easy access to the upper structure for easy engine service and maintenance.

## ON BOARD MONITORING

With onboard monitoring, the operator can check the machine's vital signs without leaving his seat. Using the LCD display, the operator can easily check oil temperatures and pressure levels, receive service interval alerts and access other information that contributes to simple maintenance and servicing of the machine.



## EASILY ACCESSIBLE SERVICE POINTS MAKE DAILY CHECKS FAST AND EFFECTIVE

- Easily visible hydraulic oil level gauge
- Accessible, grouped filters
- Easy to replace A/C filter next to the cab door
- Maintenance free air filter

# WHERE YOU NEED US WHEN YOU NEED US

LiuGong is committed to providing **reliable** and **tough** equipment combined with dependable service to customers **across the global**.



## GLOBAL NETWORK

We offer local support through our extensive dealer network in more than 130 countries. Our dealers and customers are supported by 12 regional subsidiaries and 9 global parts centers, all offering expert training, parts and service support.

## PROFESSIONAL ADVICE

No matter the job, we can help you choose the right machine, with the right specifications, options and attachments for your business. We are committed to ensure maximum uptime and lowest cost of ownership to ensure you get good profitable return from your equipment.

## SERVICE AGREEMENTS

At LiuGong, we offer service agreements to support your business needs and help you take control of all your costs. Talk to us today.



# SPECIFICATIONS

**Operating weight** 25,500-28,200 kg

Operating weight includes coolant, lubricants, full fuel tank, cab, standard shoes, boom, arm, bucket and operator 75 kg .

**Bucket capacity** 0.58 - 1.2 m<sup>3</sup>

## ENGINE

### Description

Cummins EPA Tier 2 / EU Stage II, inline 6-cylinder, turbocharged, mechanically controlled direct injection. Air cleaner: Cummins direct flow air filter. Cooling system: Charge air cooler

Emission rating	EPA Tier 2 / EU Stage II
Engine manufacturer	Cummins
Engine model	6BTAA5.9-C178-II
Aspiration	Wastegate Turbo (WGT)
Charged air cooling	After cooler
Cooling fan drive	Direct
Displacement	5.9 L
Rated speed	2,000 rpm
Engine output - net (SAE J1349 / ISO 9249)	125 kW ( 168 hp / 170 ps)
Engine output - gross (SAE J1995 / ISO 14396)	133 kW ( 178 hp / 181 ps)
Maximum torque	708 N·m @1,200 rpm
Bore × Stroke	102 × 120 mm

## UNDERCARRIAGE

Track shoe each side	51
Link pitch	190 mm
Shoe width, triple grouser	600/700/800/900 mm
Bottom rollers each side	9
Top rollers each side	2

## SWING SYSTEM

### Description

Planetary gear reduction driven by high torque axial piston motor, with oil disk brake. Swing parking brake resets within five seconds after swing pilot controls return to neutral.

Swing speed 12 rpm

Swing torque 80,800 N·m

## HYDRAULIC SYSTEM

### Main pump

Type Two variable displacement piston pumps

Maximum flow 2 × 240 L/min

### Pilot pump

Type Gear pump

Maximum flow 19 L/min

### Relief valve setting

Implement 34.3/37.3 MPa

Travel circuit 34.3 MPa

Slew circuit 25.5 MPa

Pilot circuit 3.9 MPa

### Hydraulic cylinders

Boom Cylinder – Bore × Stroke  $\Phi 130 \times 1,350$  mm

Arm Cylinder – Bore × Stroke  $\Phi 145 \times 1,635$  mm

Bucket Cylinder – Bore × Stroke  $\Phi 130 \times 1,075$  mm

## ELECTRIC SYSTEM

System voltage 24 V

Batteries 2 x 12 V

Alternator 24 V - 70 A

Start motor 24 V - 7.5 kW

## SERVICE CAPACITIES

Fuel tank 470 L

Engine oil 25 L

Final drive (each) 5.5 L

Swing drive 4.4 L

Cooling system 30 L

Hydraulic reservoir 210 L

Hydraulic system total 330 L

## SOUND PERFORMANCE

Interior Sound Power Level (ISO 6396) 74 dB(A)

Exterior Sound Power Level (ISO 6395) 104 dB(A)

## DRIVE AND BRAKES

### Description

2-speed axial piston motors with oil disk brakes. Steering controlled by two hand levers with pedals.

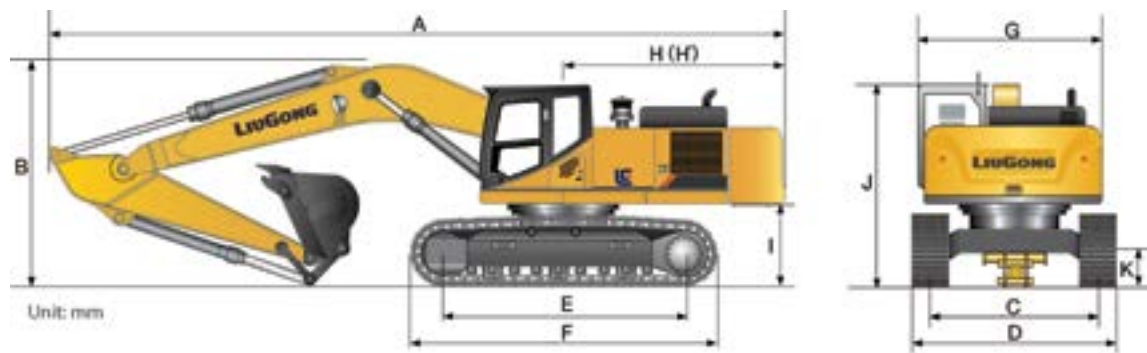
Max. travel speed High: 5.8 km/h  
Low: 3.5 km/h

Gradeability 35°/70%

Max. drawbar pull 229 kN







**DIMENSIONS**

Boom	6,000 mm	6,000 mm	8,500 mm
Arm Options	2,980 mm / 2,400 mm	2,980 mm / 2,400 mm	6,400 mm
A Shipping Length	10,220 mm / 10,200 mm	10,220 mm / 10,200 mm	12,540 mm
B Shipping Height – Top of Boom	3,480 mm	3,480 mm	3,100 mm
C Track Gauge	2,800 mm	2,800 mm	2,590 mm
D Undercarriage Width – 600 mm Shoes	3,190 mm	2,990 mm	-
700 mm Shoes	3,290 mm	3,090 mm	-
800 mm Shoes	3,390 mm	3,190 mm	3,390 mm
900 mm Shoes	3,490 mm	3,290 mm	3,490 mm
E Length to Center of Rollers	3,840 mm	3,650 mm	3,840 mm
F Track Length	4,635 mm	4,445 mm	4,635 mm
G Overall Width of Upper Structure	2,760 mm	2,760 mm	2,760 mm
H Tail swing Radius	3,100 mm	3,100 mm	3,010 mm
I Counterweight Ground Clearance	1,055 mm	1,055 mm	1,055 mm
J Overall Height of Cab	3,050 mm	3,050 mm	3,050 mm
K Min. Ground Clearance	440 mm	440 mm	440 mm
L Track Shoe Width	600 mm	600 mm	800 mm

**BOOM DIMENSIONS**

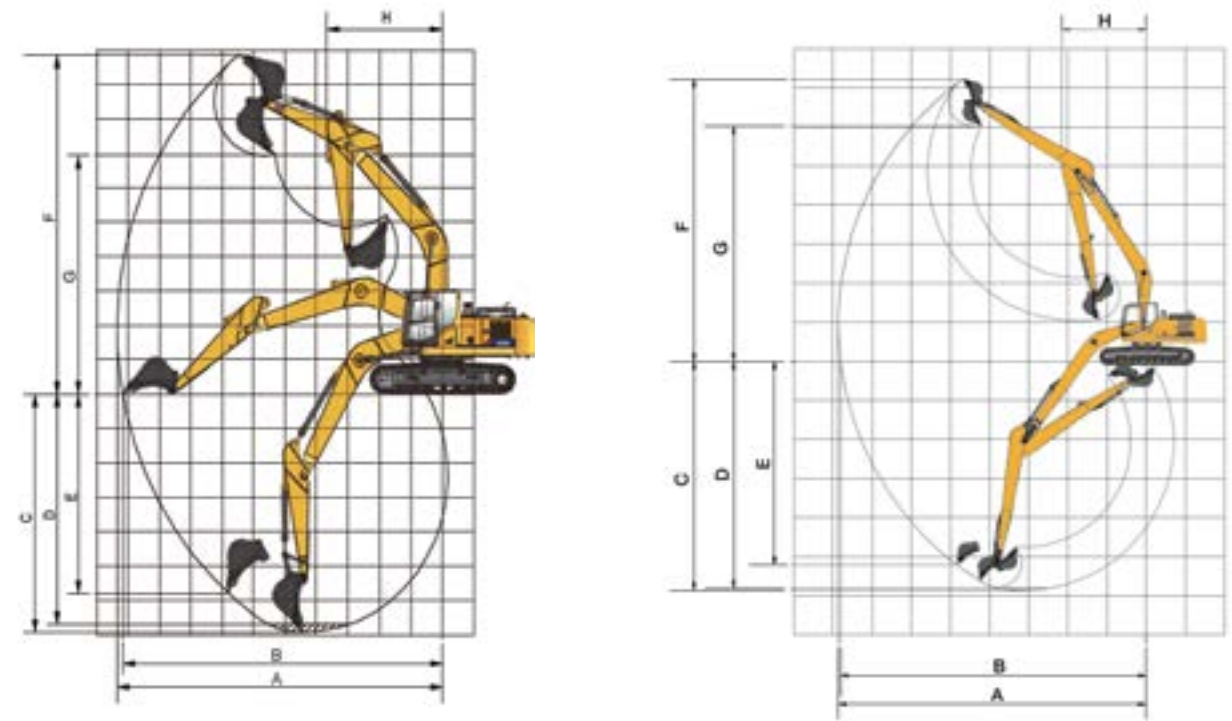
Boom	6,000 mm	8,500 mm
Length	6,210 mm	8,710 mm
Height	1,690 mm	1,580 mm
Width	726 mm	726 mm
Weight	2,450 kg	2,880 kg

Cylinder, piping and pin included.  
Boom cylinder pin excluded.

**ARM DIMENSIONS**

Arm	2,980 mm	2,400 mm	6,400 mm
Length	4,060 mm	3,490 mm	7,460 mm
Height	885 mm	895 mm	850 mm
Width	408 mm	408 mm	366 mm
Weight	1,240 kg	1,140 kg	1,400 kg

Cylinder, linkage and pin included.



**WORKING RANGE**

Boom		6,000 mm	8,500 mm	
Arm Options		2,980 mm	2,400 mm	6,400 mm
A. Max. Digging Reach		10,340 mm	9,900 mm	15,720 mm
B. Max. Digging Reach on Ground		10,150 mm	9,715 mm	15,620 mm
C. Max. Digging Depth		6,925 mm	6,340 mm	11,720 mm
D. Max. Digging Depth, 2.44 m (8') level		6,675 mm	6,120 mm	11,620 mm
E. Max. Vertical Wall Digging Depth		5,795 mm	5,445 mm	10,400 mm
F. Max. Cutting Height		9,940 mm	9,745 mm	14,410 mm
G. Max. Dumping Height		6,920 mm	6,695 mm	12,030 mm
H. Min. Front Swing Radius		3,695 mm	3,860 mm	4,300 mm
Bucket Digging Force (ISO)	Normal	165 kN	142 kN	89 kN
	Power Boost	179 kN	154 kN	-
Arm Digging Force (ISO)	Normal	124 kN	136 kN	62 kN
	Power Boost	134 kN	148 kN	-
Bucket Capacity		1.2 m <sup>3</sup>	1.4 m <sup>3</sup>	0.58 m <sup>3</sup>
Bucket Tip Radius		1,540 mm	1,540 mm	1,250 mm





**BUCKET SELECTION GUIDE**

Bucket type	Capacity	Cutting width	Weight	Teeth pcs	6,000 mm boom	8,500 mm boom
					2,980 mm arm	6,400 mm arm
General Purpose	1.2 m <sup>3</sup>	1,380 mm	1,041 kg	5	C	NA
General Purpose	0.58 m <sup>3</sup>	990 mm	500 kg	5	NA	A

The recommendations are given as a guide only, based on typical operation conditions. Bucket capacity based on ISO 7451, heaped material with a 1:1 angle of repose.

Maximum material density:  
 A 1,000 - 1,200 kg/m<sup>3</sup> : Sand and sandy loam, Humus, Planting soil, Stony loam  
 B 1,200 - 1,500 kg/m<sup>3</sup> : Building soil, Cemented backfill, Ice clay, Natural small gravel  
 A,B 1,000-1,500 kg/m<sup>3</sup> : Refer to A&B description  
 C 1,600 - 2,000 kg/m<sup>3</sup> : Building soil, Cemented backfill, Ice clay  
 D 2,000 - 2,200 kg/m<sup>3</sup> : Gravel, Pebbles  
 E 2,200 - 2,500 kg/m<sup>3</sup> : Coal seam, Shale

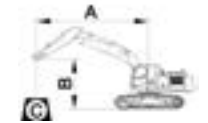
**MACHINE WEIGHTS AND GROUND PRESSURE**

Shoe width	Operating weight	Ground pressure	Overall width	Operating weight	Ground pressure	Overall width
	6,000 mm boom, 2,980 mm arm, 1.2 m <sup>3</sup> bucket, 5,400 kg counterweight			8,500 mm boom, 6,400 mm arm, 0.58 m <sup>3</sup> bucket, 6,800 kg counterweight		
600 mm	25,500 kg	50.5 kPa	3,190 mm	/	/	/
700 mm	25,800 kg	43.8 kPa	3,290 mm	/	/	/
800 mm	26,100 kg	38.8 kPa	3,390 mm	27,900 kg	41.4 kPa	3,390 mm
900 mm	26,400 kg	34.9 kPa	3,490 mm	28,200 kg	37.2 kPa	3,490 mm

**925E with 600 mm shoes, 2,980 mm arm** **Conditions**

A: Reach from swing center  
 B: Bucket hook height  
 C: Lifting capacity  
 Cf: Rating over front  
 Cs: Rating over side

Boom length: 6,000 mm  
 Arm length: 2,980 mm  
 Bucket: None  
 Counterweight: 5,000 kg  
 Shoes: 600 mm triple grouser  
 Unit: kg



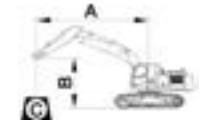
**A (Unit: m)**

B (m)	3.0		4.5		6.0		7.5		MAX REACH		A (m)
	Cf	Cs	Cf	Cs	Cf	Cs	Cf	Cs	Cf	Cs	
7.5									*5,340	*5,340	6.7
6.0					*6,710	*6,710	*6,440	5,170	*5,360	4,960	7.7
4.5					*7,610	7,110	*7,020	5,100	*4,950	4,270	8.4
3.0			*11,580	10,260	*8,870	6,790	7,190	4,950	*5,440	3,990	8.7
1.5			*13,940	9,650	9,750	6,500	7,020	4,800	*5,470	3,850	8.8
GROUND LEVEL			15,090	9,350	9,520	6,290	6,890	4,690	5,700	3,920	8.6
-1.5	*13,360	*13,360	15,000	9,270	9,420	6,200	6,840	4,640	6,170	4,210	8.1
-3.0	*20,270	18,440	*14,380	9,340	9,450	6,230			7,160	4,850	7.3
-4.5	*16,920	*16,920	*12,280	9,560	*8,850	6,420			*8,850	6,420	6.0

**925E with 600 mm shoes, 2,400 mm arm** **Conditions**

A: Reach from swing center  
 B: Bucket hook height  
 C: Lifting capacity  
 Cf: Rating over front  
 Cs: Rating over side

Boom length: 6,000 mm  
 Arm length: 2,400 mm  
 Bucket: None  
 Counterweight: 5,000 kg  
 Shoes: 600 mm triple grouser  
 Unit: kg



**A (Unit: m)**

B (m)	3.0		4.5		6.0		7.5		MAX REACH		A (m)
	Cf	Cs	Cf	Cs	Cf	Cs	Cf	Cs	Cf	Cs	
7.5					*7,530	7,250			*7,530	7,250	6.0
6.0					*7,480	7,240			*6,970	5,440	7.2
4.5			*10,020	*10,020	*8,310	7,020	7,290	5,060	6,710	4,660	7.9
3.0			*12,720	10,050	*9,500	6,730	7,160	4,940	6,270	4,340	8.2
1.5			*14,730	9,540	9,710	6,470	7,020	4,810	6,080	4,190	8.3
GROUND LEVEL			15,090	9,360	9,530	6,310	6,930	4,720	6,230	4,280	8.1
-1.5	*12,680	*12,680	*15,030	9,350	9,480	6,260	6,920	4,720	6,800	4,640	7.6
-3.0	*18,640	*18,640	*13,790	9,480	9,570	6,340			8,190	5,520	6.7
-4.5			*10,900	9,780					9,170	7,980	5.2



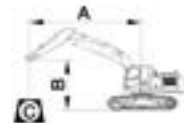


**925E with 700 mm shoes, 2,980 mm arm**

**Conditions**

A: Reach from swing center  
 B: Bucket hook height  
 C: Lifting capacity  
 Cf: Rating over front  
 Cs: Rating over side

Boom length: 6,000 mm  
 Arm length: 2,980 mm  
 Bucket: None  
 Counterweight: 5,000 kg  
 Shoes: 700 mm triple grouser  
 Unit: kg



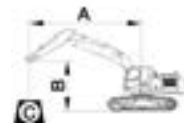
B (m)	A (Unit: m)										MAX REACH		
	3.0		4.5		6.0		7.5						
	Cf	Cs	Cf	Cs	Cf	Cs	Cf	Cs	Cf	Cs			
7.5											*5,340	*5,340	6.7
6.0					*6,710	*6,710	*6,440	5,260	*5,360	5,030			7.7
4.5					*7,610	7,210	*7,020	5,180	*4,950	4,350			8.4
3.0			*11,580	10,420	*8,870	6,900	7,300	5,030	*5,440	4,050			8.7
1.5			*13,940	9,810	9,900	6,600	7,130	4,880	*5,470	3,920			8.8
GROUND LEVEL			*15,110	9,510	9,670	6,400	7,010	4,770	5,790	3,990			8.6
-1.5	*13,360	*13,360	*15,200	9,430	9,570	6,310	6,950	4,720	6,270	4,290			8.1
-3.0	*20,270	18,750	*14,380	9,500	9,600	6,340			7,270	4,940			7.3
-4.5	*16,920	*16,920	*12,280	9,720	*8,850	6,530			*8,850	6,530			6.0

**925E with 700 mm shoes, 2,400 mm arm**

**Conditions**

A: Reach from swing center  
 B: Bucket hook height  
 C: Lifting capacity  
 Cf: Rating over front  
 Cs: Rating over side

Boom length: 6,000 mm  
 Arm length: 2,400 mm  
 Bucket: None  
 Counterweight: 5,000 kg  
 Shoes: 700 mm triple grouser  
 Unit: kg



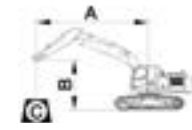
B (m)	A (Unit: m)										MAX REACH	
	3.0		4.5		6.0		7.5					
	Cf	Cs	Cf	Cs	Cf	Cs	Cf	Cs	Cf	Cs		
7.5					*7,530	7,360			*7,530	7,360		6.0
6.0					*7,480	7,350			*6,970	5,520		7.2
4.5			*10,020	*10,020	*8,310	7,130	7,400	5,140	*6,750	4,740		7.9
3.0			*12,720	10,210	*9,500	6,840	7,270	5,020	6,370	4,420		8.2
1.5			*14,730	9,700	9,870	6,580	7,130	4,890	6,180	4,270		8.3
GROUND LEVEL			*15,330	9,520	9,680	6,420	7,040	4,800	6,340	4,360		8.1
-1.5	*12,680	*12,680	*15,030	9,520	9,630	6,370	7,030	4,800	6,910	4,720		7.6
-3.0	*18,640	*18,640	*13,790	9,640	9,720	6,450			8,320	5,620		6.7
-4.5			*10,900	9,940					*9,170	8,110		5.2

**925E with 800 mm shoes, 2,980 mm arm**

**Conditions**

A: Reach from swing center  
 B: Bucket hook height  
 C: Lifting capacity  
 Cf: Rating over front  
 Cs: Rating over side

Boom length: 6,000 mm  
 Arm length: 2,980 mm  
 Bucket: None  
 Counterweight: 5,000 kg  
 Shoes: 800 mm triple grouser  
 Unit: kg



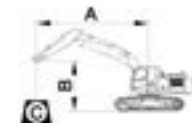
B (m)	A (Unit: m)										MAX REACH		
	3.0		4.5		6.0		7.5						
	Cf	Cs	Cf	Cs	Cf	Cs	Cf	Cs	Cf	Cs			
7.5											*5,340	*5,340	6.7
6.0					*6,710	*6,710	*6,440	5,340	*5,360	5,110			7.7
4.5					*7,610	7,320	*7,020	5,260	*4,950	4,420			8.4
3.0			*11,580	10,580	*8,870	7,010	7,410	5,120	*5,440	4,120			8.7
1.5			*13,940	9,970	10,060	6,710	7,240	4,970	*5,470	3,990			8.8
GROUND LEVEL			*15,110	9,670	9,830	6,510	7,120	4,850	5,890	4,060			8.6
-1.5	*13,360	*13,360	*15,200	9,590	9,720	6,420	7,060	4,800	6,370	4,360			8.1
-3.0	*20,270	19,060	*14,380	9,660	9,750	6,440			7,390	5,020			7.3
-4.5	*16,920	*16,920	*12,280	9,880	*8,850	6,640			*8,850	6,640			6.0

**925E with 800 mm shoes, 2,400 mm arm**

**Conditions**

A: Reach from swing center  
 B: Bucket hook height  
 C: Lifting capacity  
 Cf: Rating over front  
 Cs: Rating over side

Boom length: 6,000 mm  
 Arm length: 2,400 mm  
 Bucket: None  
 Counterweight: 5,000 kg  
 Shoes: 800 mm triple grouser  
 Unit: kg



B (m)	A (Unit: m)										MAX REACH	
	3.0		4.5		6.0		7.5					
	Cf	Cs	Cf	Cs	Cf	Cs	Cf	Cs	Cf	Cs		
7.5					*7,530	7,470			*7,530	7,470		6.0
6.0					*7,480	7,460			*6,970	5,610		7.2
4.5			*10,020	*10,020	*8,310	7,240	7,520	5,220	*6,750	4,820		7.9
3.0			*12,720	10,370	*9,500	6,950	7,380	5,100	6,470	4,490		8.2
1.5			*14,730	9,860	10,020	6,690	7,250	4,970	6,270	4,340		8.3
GROUND LEVEL			*15,360	9,680	9,840	6,530	7,150	4,890	6,440	4,430		8.1
-1.5	*12,680	*12,680	*15,030	9,680	9,790	6,480	7,140	4,880	7,020	4,800		7.6
-3.0	*18,640	*18,640	*13,790	9,800	9,870	6,560			8,450	5,710		6.7
-4.5			*10,900	10,100					*9,170	8,250		5.2





# STANDARD EQUIPMENT

## 925E with 900 mm shoes, 2,980 mm arm

A: Reach from swing center  
B: Bucket hook height  
C: Lifting capacity  
Cf: Rating over front  
Cs: Rating over side

### Conditions

Boom length: 6,000 mm  
Arm length: 2,980 mm  
Bucket: None  
Counterweight: 5,000 kg  
Shoes: 900 mm triple grouser  
Unit: kg



B (m)	A (Unit: m)										MAX REACH	A (m)
	3.0		4.5		6.0		7.5					
	Cf	Cs	Cf	Cs	Cf	Cs	Cf	Cs	Cf	Cs		
7.5										*5,340	*5,340	6.7
6.0					*6,710	*6,710	*6,440	5,420	*5,360	5,190		7.7
4.5					*7,610	7,430	*7,020	5,340	*4,950	4,490		8.4
3.0			*11,580	10,740	*8,870	7,120	7,520	5,200	*5,440	4,190		8.7
1.5			*13,940	10,130	*10,120	6,820	7,360	5,050	*5,470	4,050		8.8
GROUND LEVEL			*15,110	9,830	9,980	6,620	7,230	4,930	5,980	4,130		8.6
-1.5	*13,360	*13,360	*15,200	9,750	9,880	6,530	7,180	4,880	6,470	4,440		8.1
-3.0	*20,270	19,370	*14,380	9,820	9,910	6,550			7,510	5,110		7.3
-4.5	*16,920	*16,920	*12,280	10,040	*8,850	6,750			*8,850	6,750		6.0

## 925E with 900 mm shoes, 2,400 mm arm

A: Reach from swing center  
B: Bucket hook height  
C: Lifting capacity  
Cf: Rating over front  
Cs: Rating over side

### Conditions

Boom length: 6,000 mm  
Arm length: 2,400 mm  
Bucket: None  
Counterweight: 5,000 kg  
Shoes: 900 mm triple grouser  
Unit: kg



B (m)	A (Unit: m)										MAX REACH	A (m)
	3.0		4.5		6.0		7.5					
	Cf	Cs	Cf	Cs	Cf	Cs	Cf	Cs	Cf	Cs		
7.5					*7,530	*7,530			*7,530	*7,530		6.0
6.0					*7,480	*7,480			*6,970	5,700		7.2
4.5			*10,020	*10,020	*8,310	7,350	*7,600	5,300	*6,750	4,900		7.9
3.0			*12,720	10,530	*9,500	7,060	7,500	5,180	6,570	4,560		8.2
1.5			*14,730	10,020	10,170	6,800	7,360	5,060	6,370	4,410		8.3
GROUND LEVEL			*15,360	9,840	9,990	6,640	7,260	4,970	6,540	4,510		8.1
-1.5	*12,680	*12,680	*15,030	9,840	9,940	6,590	7,260	4,960	7,130	4,880		7.6
-3.0	*18,640	*18,640	*13,790	9,960	10,030	6,670			8,580	5,810		6.7
-4.5			*10,900	10,260					*9,170	8,380		5.2

### ENGINE SYSTEM

- Cummins engine 6BTA5.9-C178-II, EPA Tier 2/ EU Stage II, turbocharged, 6 cylinder, 4 stroke, water cooled.
- Air filter with pre-cleaner
- Pre-filter with water separator
- Auto-idle speed control
- Aspiration, Wastegate Turbo (WGT)
- IPC (Intelligent Power Control) System
- Radiator, oil cooler, and charge air cooling; direct drive cooling fan
- Engine overheat prevention system
- Engine oil filter

### DRIVETRAIN

- Hydraulic motor, one-piece two-gear piston and reducer
- 2-speed travel system with automatic shift

### SWING SYSTEM

- High-torque piston swing motor with integral spring set and automatic hydraulic release swing brake

### HYDRAULIC SYSTEM

- Main pump: two variable displacement piston pumps, ready for PTO
- Pilot pump: gear
- Cylinders: boom, arm, bucket
- Power boost function
- Boom and arm regeneration circuits
- Pilot oil filter
- Pilot control shut-off lever
- 6-working mode selection system: Power, Economy, Fine, Lifting, Breaker, Attachment

### DIGGING EQUIPMENT

- 925E
- 6,000 mm boom
- 2,980 mm arm
- 1.2 m³ (SAE, heaped) bucket

### OPERATOR STATION

- Pressurized and sealed cab with all-around visibility, large roof window with slide sliding sun visor, front window wiper and removable lower window
- Air conditioner, heater, defroster
- Mechanical suspension seat
- AM/FM radio
- Glass-breaking hammer
- Cigarette lighter
- Cup holder
- Floor mat
- Storage box
- Fire extinguisher
- One key for all locks

### INSTRUMENTATION

- Color LCD monitor with alarms, filter/fluid change, fuel rate, water temperature, work mode, fault code, working hour, etc.
- Fuel gauge
- Hydraulic oil level gauge

### ELECTRICAL

- Alternator 70 A

- Dual batteries 2 x 12 V
- Working lights, 1 frame mounted, 2 boom mounted
- Starting, 24 V

### UNDERCARRIAGE

- 600 mm track-shoes with triple grousers
- Rollers, bottom - 9 each side, top - 2 each side
- 2 piece track-guards (each side)
- Towing eye on base frame

### GUARDS

- Belly guards
- Cover plate under travel frame

### OTHER STANDARD EQUIPMENT

- Counterweight, 5,000 kg
- Maintenance tool kit
- Maintenance parts package

# OPTIONAL EQUIPMENT

### ENGINE SYSTEM

- Electrical fuel refilling pump

### HYDRAULIC SYSTEM

- Hydraulic attachments rotation lines
- Overloading warning
- Hose burst safety valves, prevention of boom or arm supply dropped when the lines split.
- Dual way auxiliary lines
- Quick coupler lines (low and high pressure)

### OPERATOR STATION

- Operation protection guard (included cab front and top guard, bar)
- Operation protection screen (on cab front, net)
- Operation protection screen (front-lower)
- Roll-Over Protective System (ROPS)
- Rain visor
- Mechanic heated suspension seat
- Mechanic suspension seat

### UPPER STRUCTURE

- Upper frame protection (wire)
- 8mm thickness platform bottom plate
- Bucket cylinder guard

### UNDERCARRIAGE

- 700 mm, 800 mm, 900 mm track-shoes with triple grousers
- 3 piece track-guards (each side)

### DIGGING EQUIPMENT

- Boom: long reach 8,500 mm
- Arm: 2,400 mm, long reach 6,400 m,
- Bucket: 0.58/1.1/1.3/1.4 m³
- Hydraulic hammers (LiuGong & Soosan)
- Hydraulic quick couplers

### ELECTRICAL

- LED working lights on cab, 4 front and 2 rear
- Rearview camera
- Travel alarm
- Rotating beacon
- 4 boom working lights
- Working lights, 2 cab mounted

### ADDITIONAL OPTIONS

- Refuelling pump
- Oil bath pre-cleaner
- 3 track guards (each side)
- Counterweight, 6,800 kg
- Narrow track





**Guangxi LiuGong Machinery Co., Ltd.**

No. 1 Liutai Road, Liuzhou, Guangxi 545007, PR China  
T: +86 772 388 6124 E: overseas@liugong.com  
www.liugong.com

Like and follow us:



LG-PB-925E-T2-24-012022-ENG

The LiuGong series of logos herein, including but not limited to word marks, device marks, letter of alphabet marks and combination marks, as the registered trademarks of Guangxi LiuGong Group Co., Ltd. are used by Guangxi LiuGong Machinery Co., Ltd. with legal permission, and shall not be used without permission. Specifications and designs are subject to change without notice. Illustrations and pictures may include optional equipment and may not include all standard equipment. Equipment and options varies by regional availability.